

Pro Bow The Hand - www.probowthehand.com

Instructions for Small Hand - 3 Ribbons

Congratulations on your purchase of Pro Bow The Hand. This item truly revolutionizes the construction of bows. Never before has making a bow been so simple with perfect results every time.

We are committed to your satisfaction as a customer. Instructions on how to use the Pro Bow are on our website at www.probowthehand.com To access the instructions, click on the bow gallery button. Next, select large or small hand. Within each gallery are two instructional videos – one using one ribbon and one using 3 ribbons. These videos are about 10 minutes long and show step-by-step instructions on how to use the Pro Bow.

After you have watched the instructional videos and are a master at using The Hand, you are ready to use my “bow recipes.” You will find these recipes in the bow galleries along with a short, accompanying video. The bow recipe videos are filmed much faster and show you how different ribbons and finger placement create beautiful bows. Each time I make something I think you will also enjoy, I post it as a bow recipe! We strive to take the guess work out of bow making and show the wide range of bows that can be made using The Hand. However, you will certainly want to experiment for yourself!

We would love to hear from you and post your wonderful creations on our Facebook page to share with others.

Included in the box please find - 1 bag of 14 – 2 ½” x ¼” spindles – these are for the Hand and 3 – 3 ½” x 3/8” – these are for the Spool Holder. Also one set of 13 - non skid pads. Please stick on the back of the Hand and Spool Holder as seen in [Figure 1](#). This insures a firm work platform.



Figure 1

Lets look at the face of the Hand, [Figure 2](#). Notice the lines connecting the holes. This is so you can visually follow the row you are working on. Notice the “C”. This is the center loop of the bow. The hole nearest the nail is the base finger, or the center of the bottom of the bow. You will always have a finger in this position when make basic bows. Next notice the 1R-1L, 2R-2L, etc. After the center loop work outward to 1 Right then 1 Left. Now both sides of your bow are perfect. If you want a fuller bow move to

2 Right then 2 Left. This row of loops are $\frac{1}{4}$ " bigger than 1R-1L. Want a fuller bow – move on to 3 R-3L, etc.

Now notice A-B-C-D-E. The size of the bow is determined by which row you work on. Small Bow – Row A, then each letter B-C-D-E the bow becomes bigger.

The fullness of the bow or how many loops the bow has is determined by how many times you go around each finger - C, 1R-1L, 2R-2L, etc. The style of the bow is determined by mixing the use of fingers on different rows, an example of this will follow.



Figure 2

The bow pictured in [Figure 3](#) is a basic 1-ribbon bow using 1 yard 24" of each ribbon. The ribbon is 1" wide or #9 ribbon. This is a very nice small package bow! You will also need 1 piece of 26-gauge wire cut to about 18 inches.



Figure 3

Step 1

Sit the hand on your work surface with the spool holder sitting on the **Right Always** even if you are left-handed. It is a right to left hand movement. You will be using both hands equally! Next, place the fingers in position, the flat end goes in the holes, the tapered end of the finger goes up. The ends of the fingers are tapered so the ribbon easily glides over them. Place fingers as shown in [Figure 4](#). Base finger, then center finger on Row D – Finger 1R-1L – Finger 2R-2L, Finger 3R-3L.

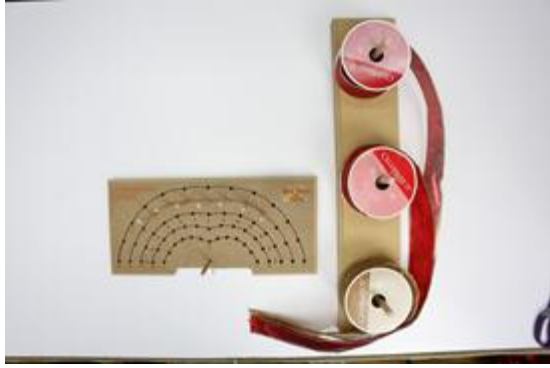


Figure 4

Step 2

Place ribbon on spool holder reeling off to the right. Pull ribbon downward. [*Figure 5*](#)

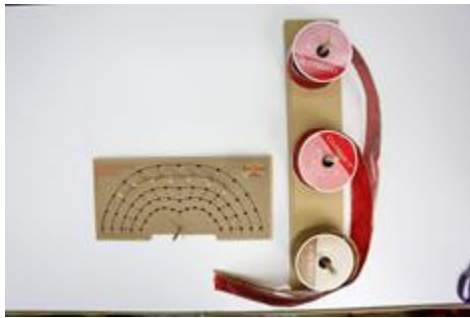


Figure 5

Step 3

Pinch Ribbon $\frac{1}{2}$ inch from the end. Hold in left hand. Keep your hand close to the table. If you raise your hand up in the air the ribbon will pop off the spools and too much ribbon will reel off and get tangled. You don't want that to happen. [*Figure 6*](#)

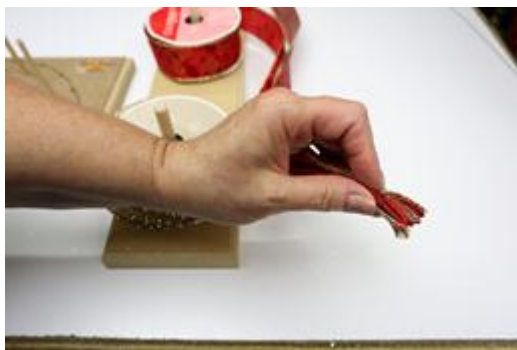


Figure 6

Step 4

Hold 18-inch piece of wire in Right Hand and approach left hand and the pinch from the back. Slip the wire between pinch and finger. Leave 9 inches up – 9 inches down.

Figure 7 & 8



Figure 7



Figure 8

Step 5

Now hold top of wire with Right Hand and swing toward you. Go around the pinch very tightly and neatly, about 2 times. Figure 9



Figure 9

Step 6

This is how it should look. Figure 10



Figure 10

Step 7

Now pull ribbon toward Hand. Notice how low I am keeping the ribbon to the table. This will keep ribbon from popping off of the spools and tangling. [Figure 11](#)



Figure 11

Step 8

Notice how I have gone around center finger from the left and then pulled the ribbon downward to base finger. Notice I have kept 1 piece of wire up and one wire down. Pinch the wired ribbon on the “pinch” to the base finger. Do Not push the pinch all the way down to the hand. Go up the base finger to half the width of the ribbon you are using. I am using 1 inch ribbon so I am up the baser finger 1/2 inch. Continue holding pinch in place with Right Hand. With Left Hand pull wire up base finger then wrap around top of finger. To start wrap go left and go around back of base finger then continue wrapping. Leave just a tiny tip sticking out so you can get to the wire at the end of bow making. Now holding pinch in place with Left Hand, pull the downward wire with Right Hand and go around nail just once and stick all of the wire under the board, leaving a small loop so you can also get to this piece of wire at the end. This is how your work should look at this point. The ribbon firmly wired in place to the hand. [Figure 12, 13 & 14](#)



Figure 12



Figure 13



Figure 14

Step 9

Pull ribbon down snugly. Now I will be referring to the bottom edge of the ribbon. Notice in [Figure 15](#). Notice my Right Hand position in the picture, [Figure 16](#)

The back of my finger is touching the base Finger under the pinch. Next, the Bottom Edge of the ribbon is touching the palm of my Right Hand. My thumb is touching the top edge of the ribbon. Next, my Left Hand fingers are pushing down to my Right Hand finger. Next, I am rotating my Right Hand bringing the bottom edge of the ribbon up; this is forming a twist in the ribbon over the wired pinch.

Figure 15



Figure 16





Step 10

Now glide the ribbon with finger toward Finger 1 Right. *Figure 17*

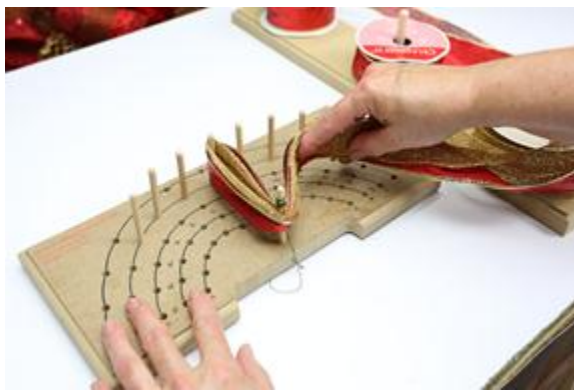


Figure 17

Step 11

Flip Ribbon over Finger 1 Right and pull down snugly. *Figure 18*



Figure 18

Step 12

Notice the $\frac{1}{2}$ twist that is forming in the hand to spool ribbon. That always forms on the Right. If you twist from the bottom edge of the ribbon – bring the bottom edge up each time; the hand to spool ribbon will never get twisted. This is so important. It saves so much time and no spools of ribbon rolling all over the floor. *Figure 19*



Figure 19

Step 13

Now notice my Left Hand position. I will do the exact movement I just did to the Right – except I will move to the left toward Finger 1 left. The back of my Left Finger is touching the base finger under the wired pinch. Now my Right Hand is pushing the ribbon down to my Left Hand. The bottom edge of the ribbon is touching my Left Hand finger. My thumb is touching the top of the ribbon. Figure 20



Figure 20

Step 14

Now I have closed my Left Hand and have twisted the ribbon bringing the bottom edge up. Figure 21

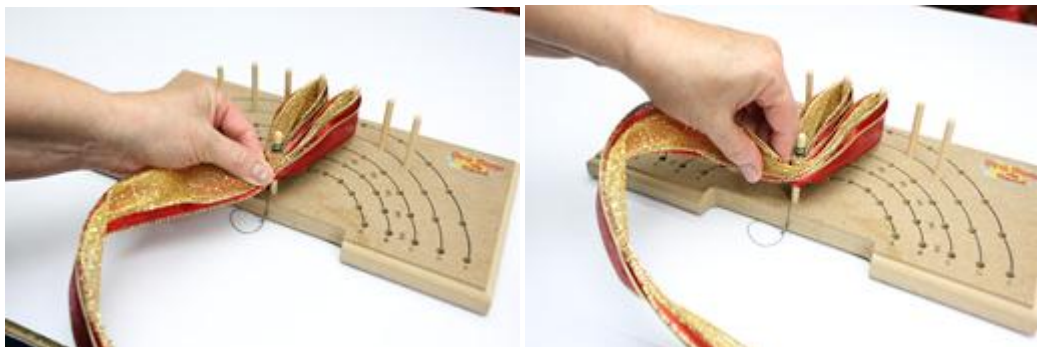


Figure 21

Step 15

Glide off of Left Hand fingers toward Finger 1 Left. Figure 22

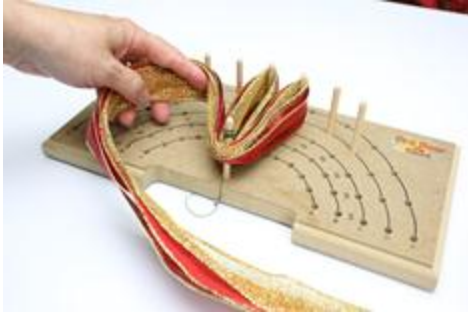


Figure 22

Step 16

Slip over Finger 1 Left and pull down snugly. *Figure 23*



Figure 23

Step 17

Notice that the ribbon from the Hand to spools is straight – no twist. If you do the Right to Left hand movement each time and bring the bottom edge of the ribbon up when twisting at Base Finger your hand to spool ribbon will never get twisted. You won't have spools of ribbon rolling all over the floor when using the spool holder properly! *Figure 24*



Figure 24

Step 18

Now twist at Base Finger – go toward Finger 2 Right. Pull down snugly. [Figure 25](#)

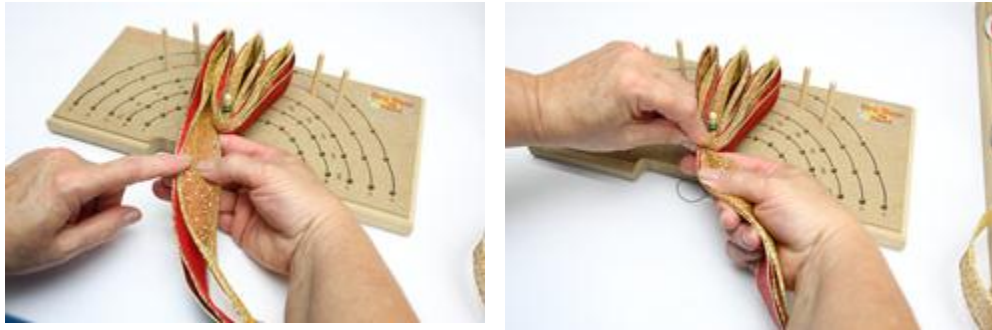


Figure 25

Step 19

Now twist at Base Finger and go toward Finger 2 Left. Pull down snugly. This is how your work should look at this point. Stack each twist one on top of the other. Pull down snugly. [Figure 26](#)



Figure 26

Step 20

Now twist at Base Finger, go over Finger 3 Right, pull down snugly. Twist at Base Finger – Bottoms up each time, go over Finger 3 Left. Pull down snugly. [Figure 27](#)



Figure 27

Step 21

Now twist at Base Finger to finish – again bring bottom edge of ribbon up. Hold with left hand. With Right Hand grab that little piece of wire you left sticking out around top of Base Finger and pull straight up in the air gently unwinding as you go. Now pull toward yourself firmly. Figure 28



Figure 28

Step 22

With Left Hand grab the loop of wire by the nail – unwind from nail and pull up firmly. Twist the two pieces of wire together as tightly as you can. Figure 29



Figure 29

Step 23

Now gently lift ribbon from the Hand. Figure 30



Figure 30

Step 24

Tie 1 piece of ribbon around package; make a firm knot right in the middle. Cut tails as long as you like. Cut a nice V in each end. Then slip 1 piece of wire under the knot – the other over the knot and pull tightly together and twist wires together. Cut off excess wire. *Figure 31*



Figure 31

Step 25

Fluff bow – pull all loops apart – always put your fingers through the loops to pull – don't pull from the edge – ribbon will tear! Fluff until you get your loops to your liking and enjoy. *Figure 32*



Figure 32

This is an example of a different Style bow. Place center Finger on row B. Then the other Fingers on row C – 1 wrap each. This will give a much smaller center loop creating a very different Style of bow. Enjoy!



Bow Recipe

Small Hand

Row B

Center Finger - 1 Wrap

Row C

Finger 2 Right & Left - 1 Wrap

Finger 3 Right & Left - 1 Wrap

Finger 4 Right & Left - 1 Wrap

Finger 5 Right & Left - 1 Wrap

Finger 6 Right & Left - 1 Wrap

Pro Bow The Hand - www.probowthehand.com